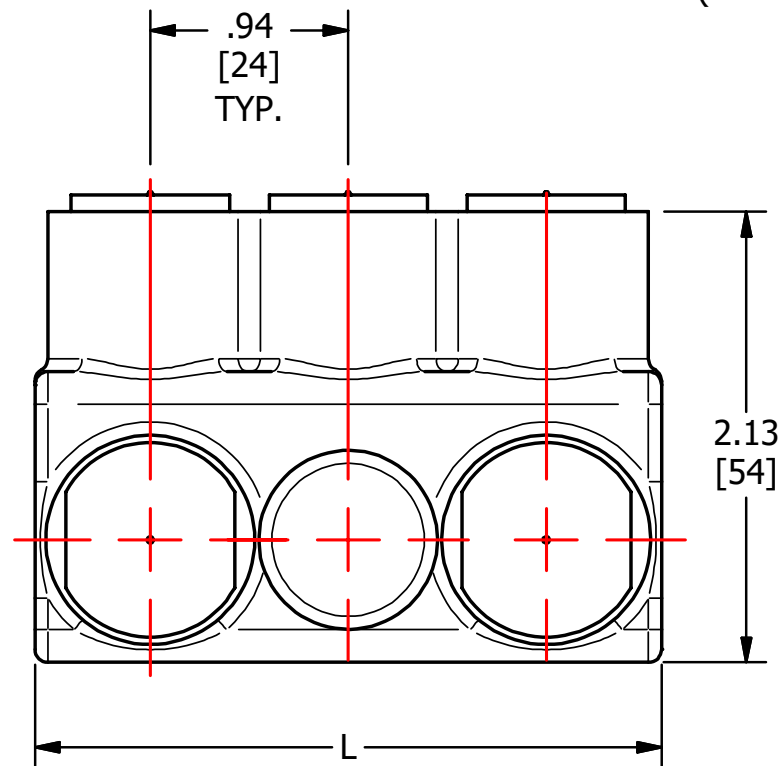
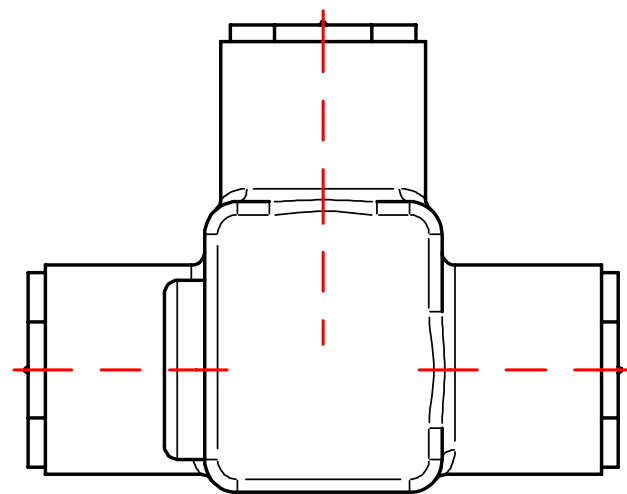
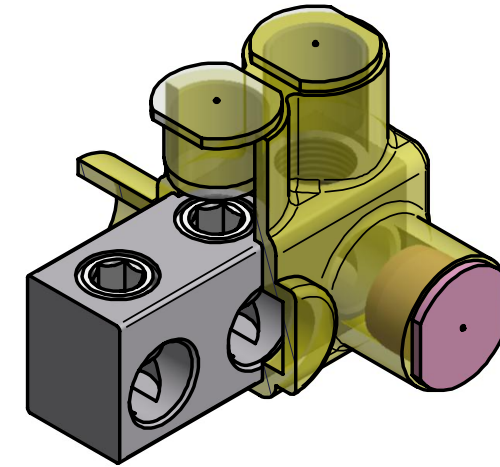
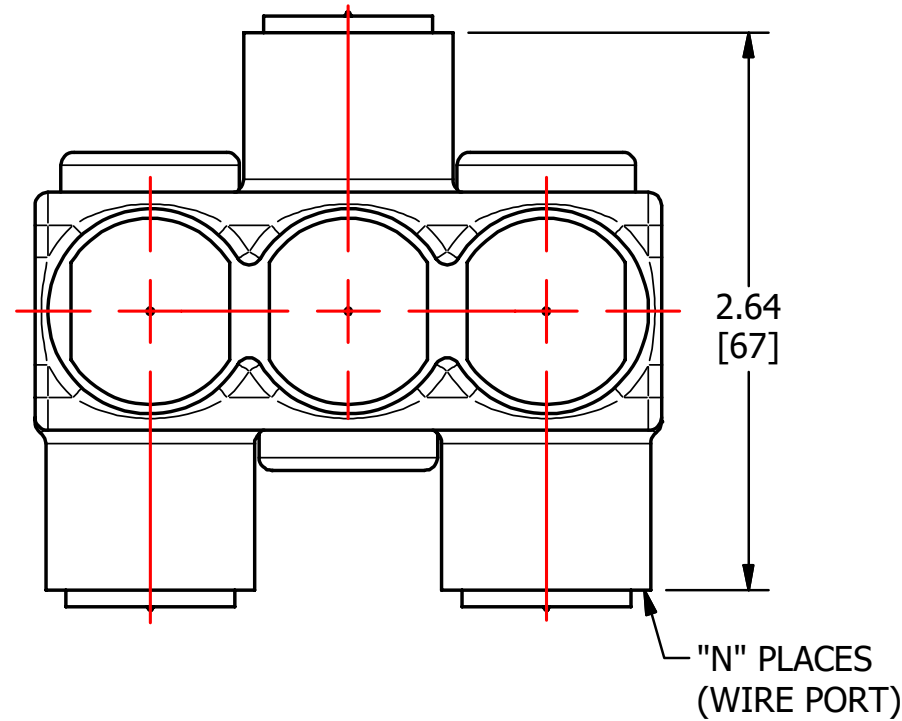


S.NO	CATALOG NUMBER	L	N	SCREW SIZE
1	NACC250-2A	2.03 [45]	2	5/8-18
2	NACC250-3A	2.97 [69]	3	5/8-18



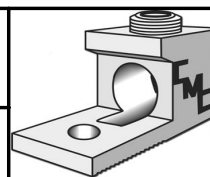
CONNECTOR FINISH: CLEAR PLATE  
CONNECTOR MATERIAL: ALUMINUM  
CONDUCTOR RANGE: 250 Kcmil - #12 AWG  
ENCAPSULE MATERIAL: CLEAR PVC

					TO ORDER CMC PRODUCTS CALL 1-513-860-4455	DRAWN BY: TS 09-24-19	NAME OF PART: ENCAPSULATED BAR ASSEMBLY	CAT. NO.: SEE TABLE
					FOR PRODUCT INFO: <a href="http://www.cmclugs.com">http://www.cmclugs.com</a>	CHECKED BY:	DWG NO: C58701678-S (CHARTED)	A
A	NEW DRAWING CREATED		09-24-19	TS		DRAWING NOT TO SCALE		SHEET NO: 1 OF 1
REV.	DESCRIPTION	ECN	DATE	INIT.				

THIS INFORMATION IS PROPRIETARY TO CONNECTOR MFG. CO. AND IS NOT TO BE DISCLOSED OUTSIDE OF CONNECTOR MFG. CO. WITHOUT A CONFIDENTIALITY AGREEMENT



**CONNECTOR MANUFACTURING CO.**



HAMILTON, OHIO